

DWR RADAR

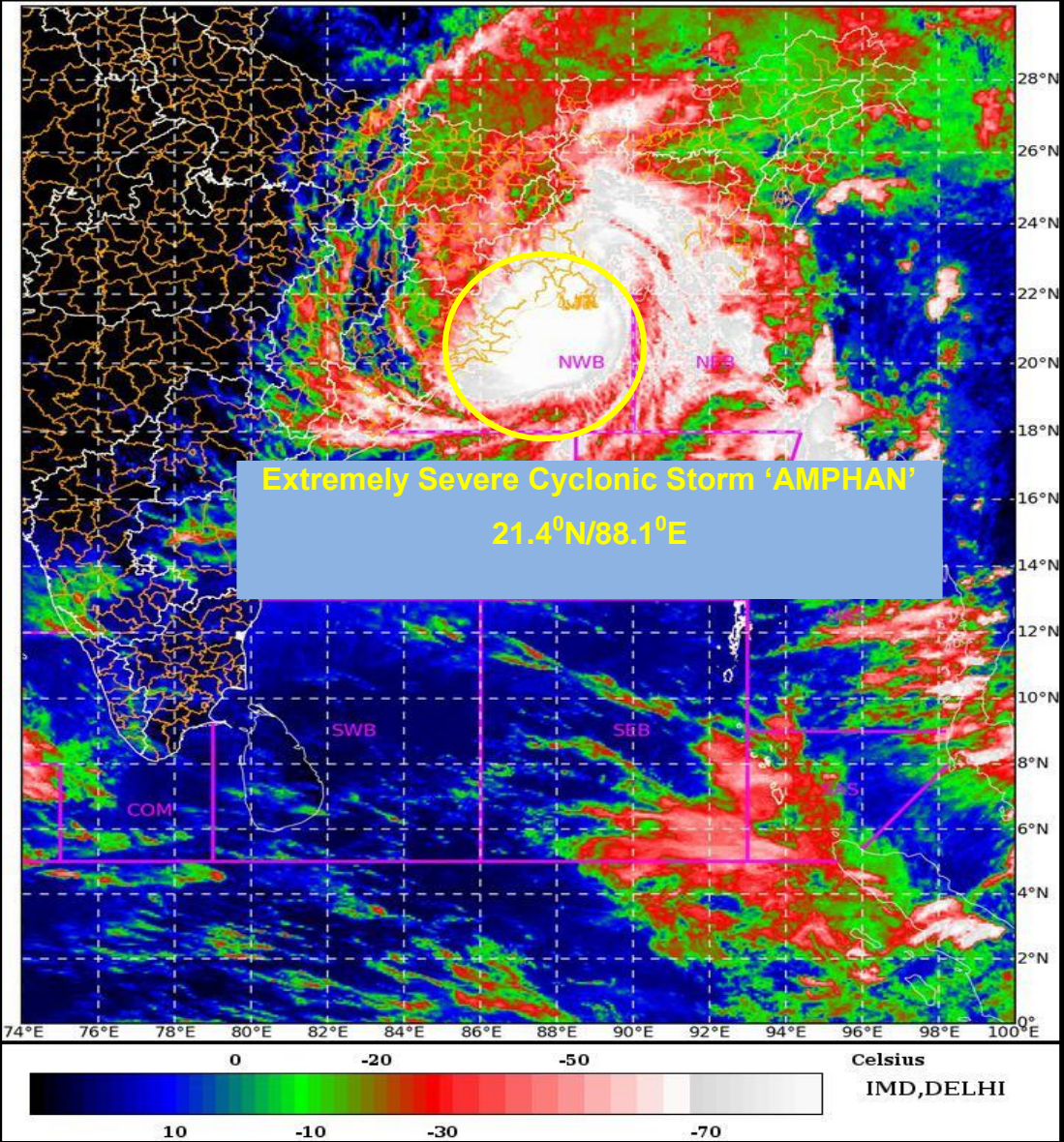
SAT : INSAT-3D IMG

20-05-2020/(0830 to 0856) GMT

IMG_TIR1_TEMP 10.8 um

20-05-2020/(1400 to 1426) IST

L1C Mercator



Storm Surge forecast from INCOIS issued at 1500 IST of 20th May 2020

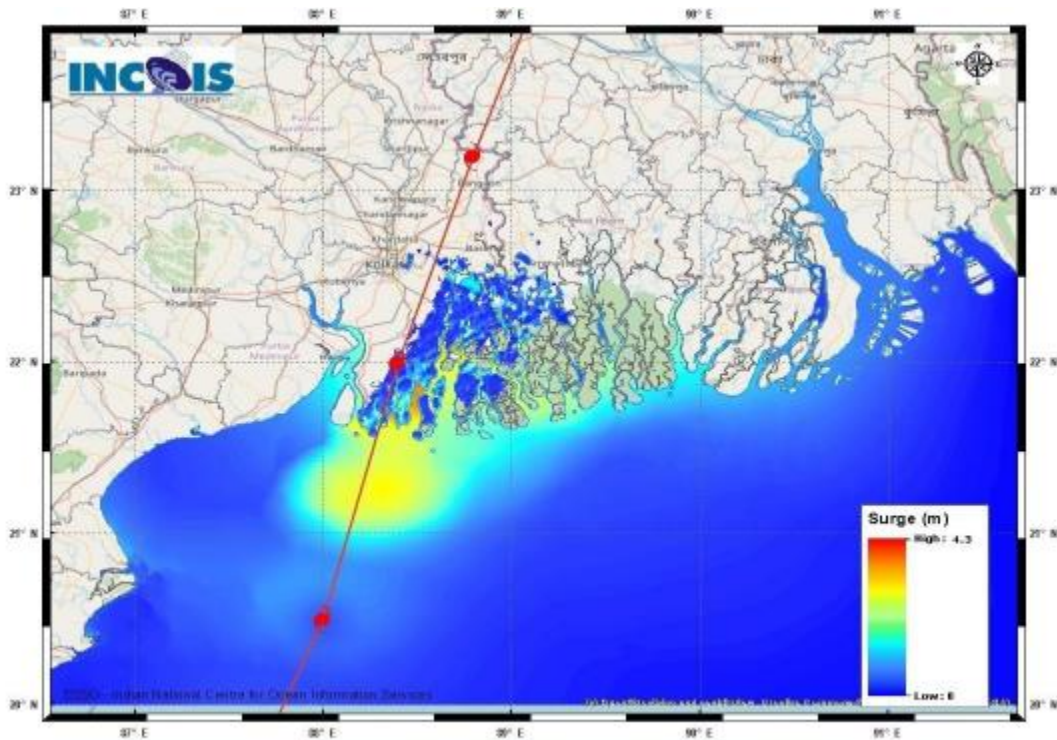


Fig: Computed storm surge & Inundation based on the IMD track forecast

STORM SURGE HEIGHT INFORMATION:

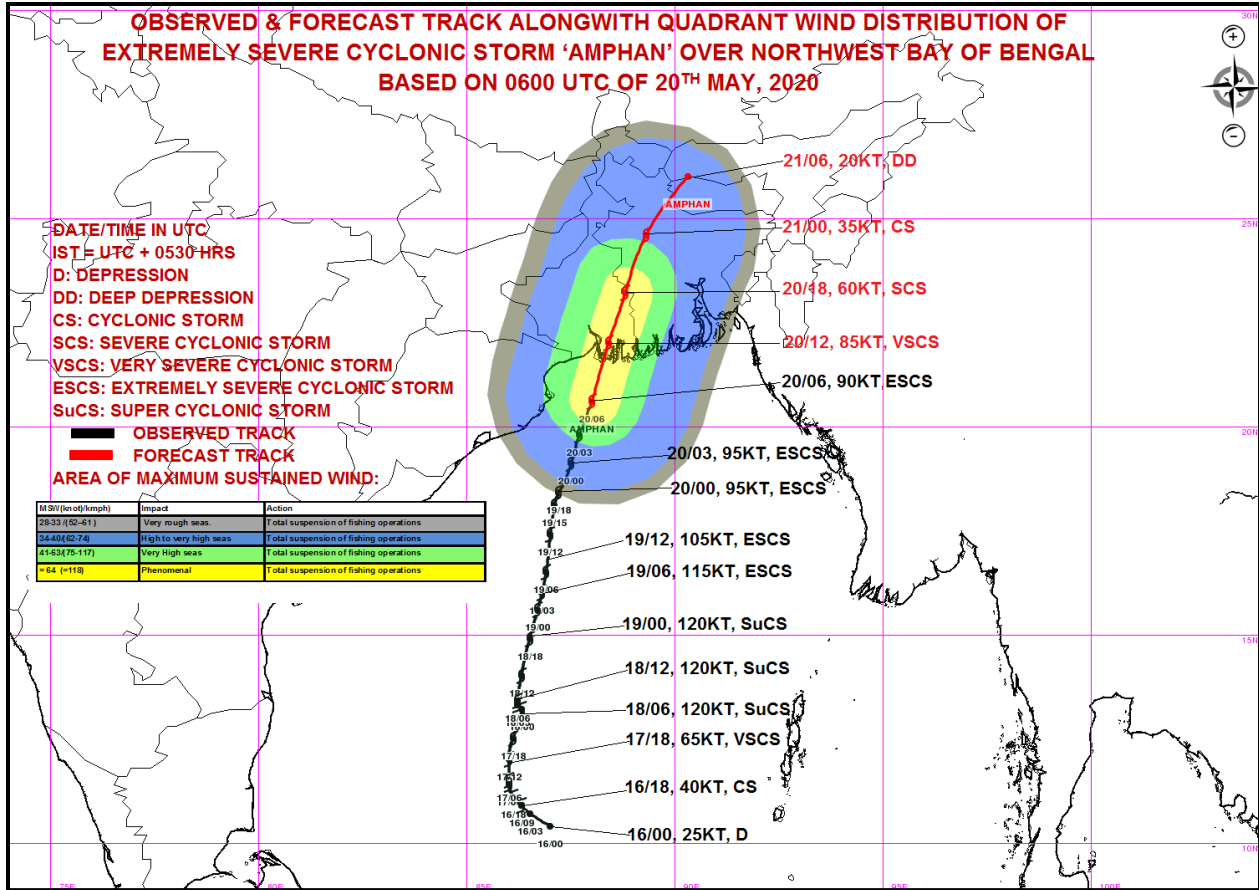
* The below listed surge heights are over and above astronomical tide.

MANDAL/TALUK	DISTRICT	STATE / UNION TERRITORY	NEAREST PLACE OF HABITATION	* STORM SURGE (m)	* EXPECTED INUNDATION EXTENT (km)
Bhangar-I	South 24 Parganas	West Bengal	Bhangar-I	0.5-4.3	Around 17
Basirhat	North 24 Parganas	West Bengal	Basirhat	0.5-3.9	Around 10
Diamond Harbour	South 24 Parganas	West Bengal	Daimond Harbor	0.5-3.5	Around 17
Bagnan-II	Haora	West Bengal	Bagnan-II	0.5-1.0	Around 0.4
Mahisadal	Medhinipur	West Bengal	Tentul Berya	0.5-1.0	Around 0.4
Nandigram-I	Medhinipur	West Bengal	Nakchira Chara	0.5-0.8	Around 0.4
off Haldia	Purba Medhinipur	West Bengal	Nayachar Island	0.5-1.5	Around 0.5
Sutahata-I	Medinipur	West Bengal	Maniruddin Chara	0.5-1.6	Around 0.4
Sutahata-II	Medinipur	West Bengal	Haldia	0.5-1.5	Around 0.3
Digha	Purba Medhinipur	West Bengal	Digha	0.5-0.7	Around 0.3
Tamluk	East Midnapore	West Bengal	Tamluk	0.5-1.5	Around 0.3
Bhadrak	Bhadrak	Odisha	Mohanpur	0.5-1.1	Around 0.8
Kendrapara	Kendraparha	Odisha	Baligarh	0.5-0.8	Around 2.6
Baleshwar	Baleshwar	Odisha	Sahapur	0.5-0.7	Around 0.7

**OBSERVED & FORECAST TRACK ALONGWITH QUADRANT WIND DISTRIBUTION OF
EXTREMELY SEVERE CYCLONIC STORM 'AMPHAN' OVER NORTHWEST BAY OF BENGAL
BASED ON 0600 UTC OF 20TH MAY, 2020**

DATE/TIME IN UTC
IST = UTC + 0530 HRS
D: DEPRESSION
DD: DEEP DEPRESSION
CS: CYCLONIC STORM
SCS: SEVERE CYCLONIC STORM
VSCS: VERY SEVERE CYCLONIC STORM
ESCS: EXTREMELY SEVERE CYCLONIC STORM
SuCS: SUPER CYCLONIC STORM
— OBSERVED TRACK
— FORECAST TRACK
AREA OF MAXIMUM SUSTAINED WIND:

MSW (kn-01/kmph)	Impact	Action
28-33 (52-61)	Very rough seas	Total suspension of fishing operations
34-40 (62-74)	High to very high seas	Total suspension of fishing operations
41-43 (75-117)	Very High seas	Total suspension of fishing operations
> 64 (>118)	Phenomenal	Total suspension of fishing operations



- 21/06, 28KT, DD
- 21/00, 35KT, CS
- 20/18, 60KT, SCS
- 20/12, 85KT, VSCS
- 20/06, 90KT, ESCS
- 20/03, 95KT, ESCS
- 20/00, 95KT, ESCS
- 19/12, 105KT, ESCS
- 19/06, 115KT, ESCS
- 19/00, 120KT, SuCS
- 18/12, 120KT, SuCS
- 18/06, 120KT, SuCS
- 17/18, 65KT, VSCS
- 16/18, 40KT, CS
- 16/00, 25KT, D

OBSERVED & FORECAST TRACK ALONG WITH CONE OF UNCERTAINTY OF EXTREMELY SEVERE CYCLONIC STORM 'AMPHAN' OVER NORTHWEST BAY OF BENGAL BASED ON 0600 UTC OF 20TH MAY, 2020

